



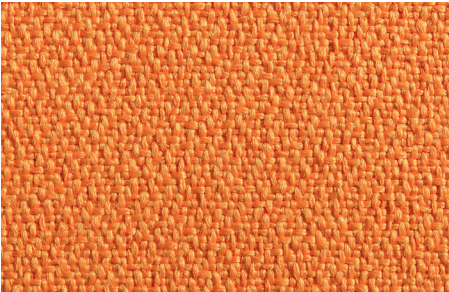
# **Classic & Inspire Standard Fabrics**

# INSPIRE

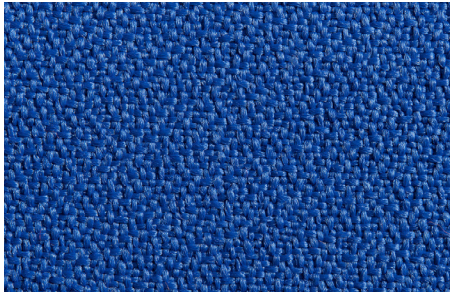
---

## FABRICS

---



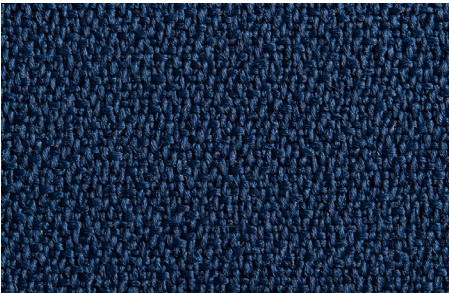
**IS20** Tangerine



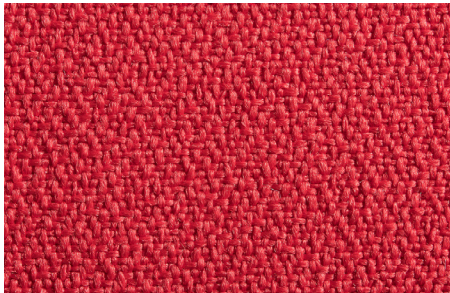
**IS21** Royal



**IS22** Cloud



**IS23** Sapphire



**IS24** Scarlet



**IS25** Pebble

## TECHNICAL INFORMATION

---

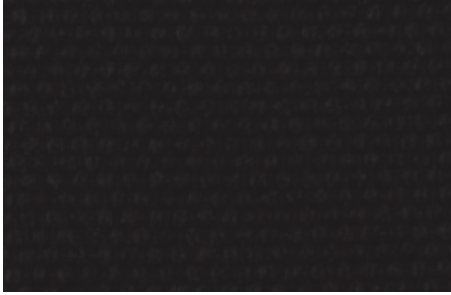
<b>Composition</b>	100% Polyester
<b>Weight</b>	300 grams per square meter. 510 grams per linear meter
<b>Width</b>	170cm / 67" +/-2%
<b>Abrasion</b>	In excess of 105,000 cycles (800g/12kPa) Martindale
<b>Flammability</b>	BS EN 1021-1: 1994 (Cigarette) BS EN 1021-2: 1994 (Match) BS 7176: 1995 Low Hazard BS 476 Part 7 Class 1  Flammability performance is dependent on the combination of material used
<b>Fastness to Light</b>	5+ [BS 1006 (1990)]
<b>Fastness to Rubbing</b>	Wet: 5 Dry: 4.5
<b>Maintenance</b>	Professional cleaning is recommended
<b>Colour Matching</b>	Batch to batch variations in shade may occur within commercial tolerances. Sample cuttings from the current stock shades can be obtained on request.
<b>Flame Retardant Option</b>	Festivo will meet BS 7176: 1995 Medium Hazard, BS 5852: 1990 Section 4 Ignition Source 5 (Crib 5), when treated with our Flammliq® process
<b>Hydroguard</b>	This special treatment is applied to provide water and stain repellency

# CLASSIC

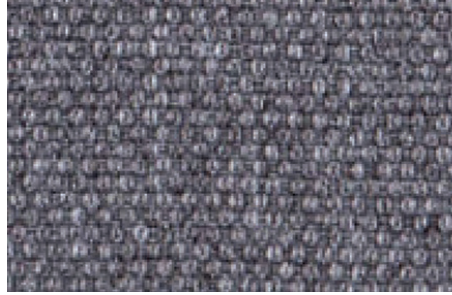
---

## FABRICS

---



**CA15** Jetblack



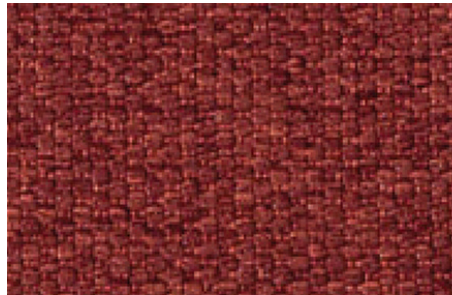
**CA11** Stone



**CA12** Indigo



**CA13** Pear



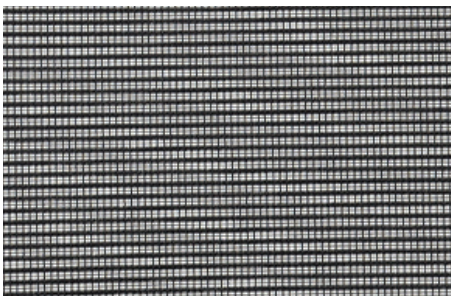
**CA14** Jacinth



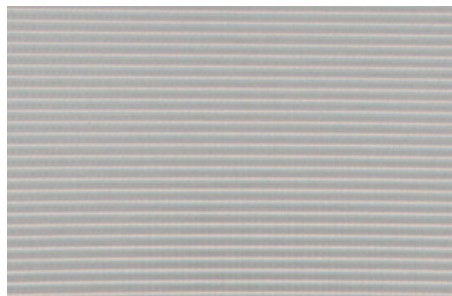
**CA10** Midnight

## MESH

---



**BM** Black Mesh



**FM** Fog Mesh

**Application** Q2 MESH TASK SEATING



## TECHNICAL INFORMATION

<b>Composition</b>	100% Polyester
<b>Weight</b>	368 grams per square meter. 560 grams per linear meter
<b>Width</b>	165cm / 65" +/-2%
<b>Abrasion</b>	In excess of 100,000 cycles {ASTM D4966-12(2016) 12kPa Martindale & Pilling Tester}
<b>Flammability</b>	BS EN 1021-1: 1994 (Cigarette) BS EN 1021-2: 1994 (Match) BS 7176: 1995 Low Hazard BS 476 Part 7 Class 1  California TB 117-2013 Section 1
<b>Fastness to Light</b>	4.5 (AATCC 16.3-2014) 40 Hours (AFU) Exposure
<b>Fastness to Rubbing</b>	Wet: 4.5 Dry: 4.5 (AATCC8-2016)
<b>Tensile Strength</b>	Warp 532.7lbf, Weft 432.8lbf {ASTM D5034-09 (2017)}
<b>Seam Slippage</b>	Warp 86.1lbf (STB), Weft 79.4lbf (STB) (ASTM D434-1995)
<b>Maintenance &amp; Cleaning</b>	Professional dry cleaning recommended <ul style="list-style-type: none"><li>• Protect from direct sunlight</li><li>• Vacuum regularly using low suction</li><li>• Wipe with a damp cloth using upholstery shampoo</li><li>• Don't scrub or use stiff brush</li><li>• Dry in the shade away from direct heat</li><li>• Allow dry thoroughly before using</li></ul>
<b>Colour Matching</b>	Batch to batch variations in shade may occur within commercial tolerances Sample cuttings from the current stock shades can be obtained on request



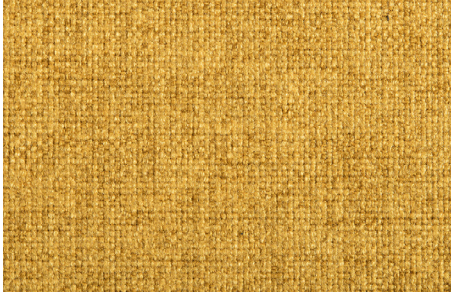
# **Align Premium Fabrics**

# ALIGN

---

## FABRICS

---



**AL172** Amber



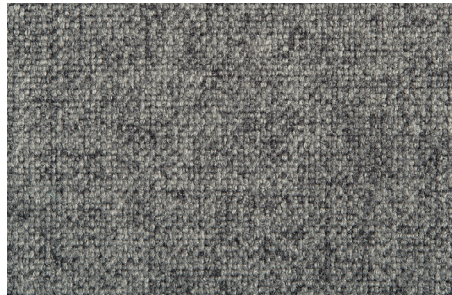
**AL173** Ruby



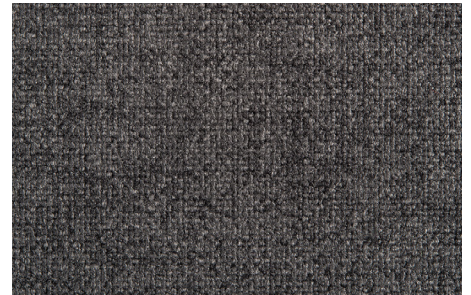
**AL174** Sand



**AL175** Fawn



**AL176** Shadow



**AL177** Raven

## TECHNICAL INFORMATION

---

<b>Composition</b>	100% Polyester
<b>Weight</b>	388 grams per square meter. 559 grams per linear meter
<b>Width</b>	144cm / 57" +/-2%
<b>Abrasion</b>	In excess of 100,000 cycles {ASTM D4966-12(2016) 12 kPa Martindale & Pilling Tester
<b>Flammability</b>	BS EN 1021-1: 1994 (Cigarette) BS EN 1021-2: 1994 (Match) BS 7176: 1995 Low Hazard BS 476 Part 7 Class 1  California TB 117-2013 Section 1
<b>Fastness to Light</b>	4.0 (AATCC 16.3-2014) 40 Hours (AFU) Exposure
<b>Fastness to Rubbing</b>	Wet: 4.5 Dry: 4.5 (AATCC8-2016)
<b>Tensile Strength</b>	Warp 340.6lbf, Weft 282lbf {ASTM D5034-09 (2017)}
<b>Seam Slippage</b>	Warp 86.4lbf (STB), Weft 88.4lbf (STB) (ASTM D434-1995)
<b>Maintenance &amp; Cleaning</b>	Professional dry cleaning recommended <ul style="list-style-type: none"><li>• Protect from direct sunlight</li><li>• Vacuum regularly using low suction</li><li>• Wipe with a damp cloth using upholstery shampoo</li><li>• Don't scrub or use stiff brush</li><li>• Dry in the shade away from direct heat</li><li>• Allow dry thoroughly before using</li></ul>
<b>Colour Matching</b>	Batch to batch variations in shade may occur within commercial tolerances Sample cuttings from the current stock shades can be obtained on request